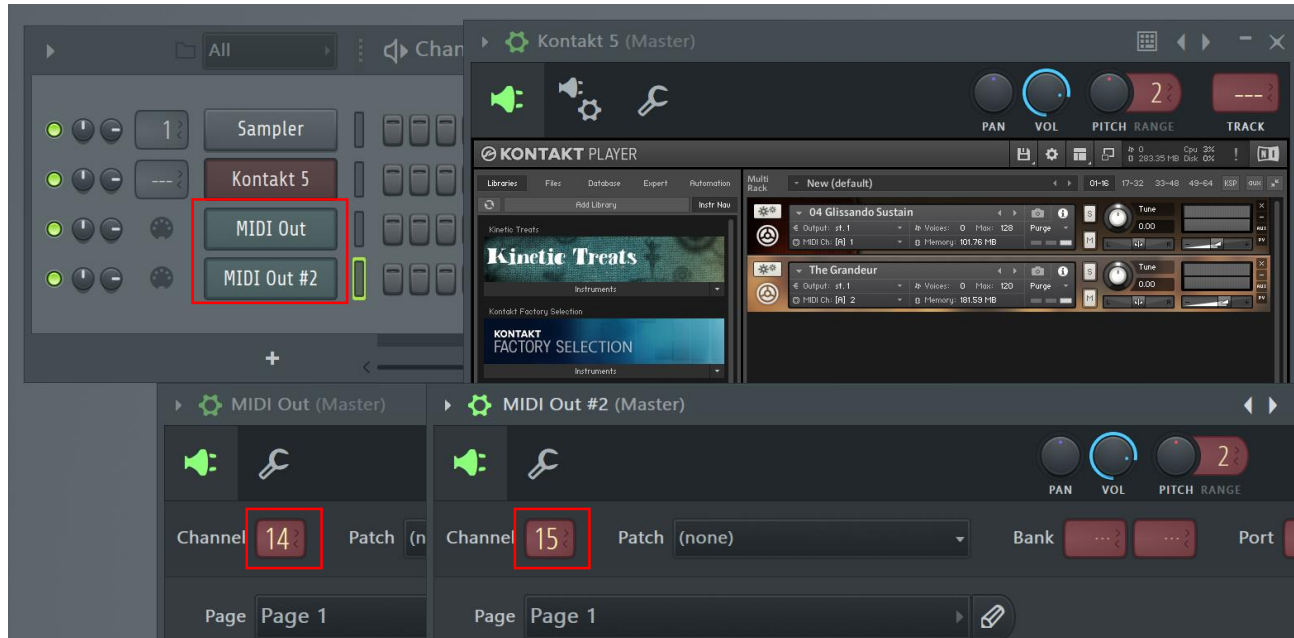


FL Studio & Native Instruments KONTAKT Player

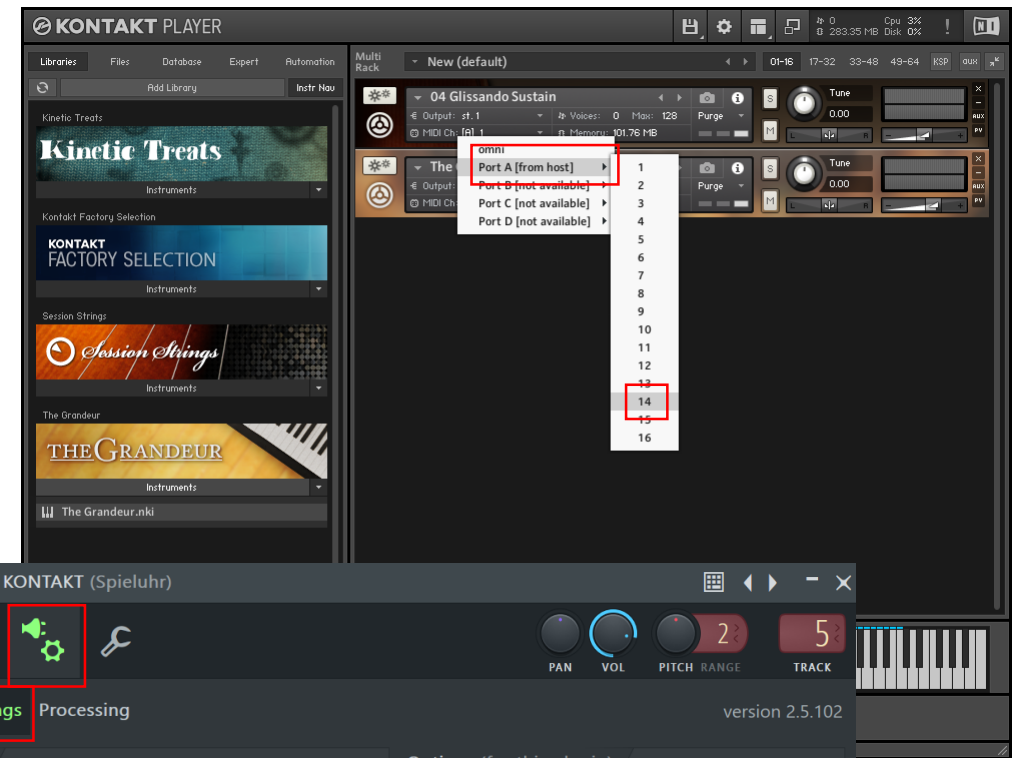
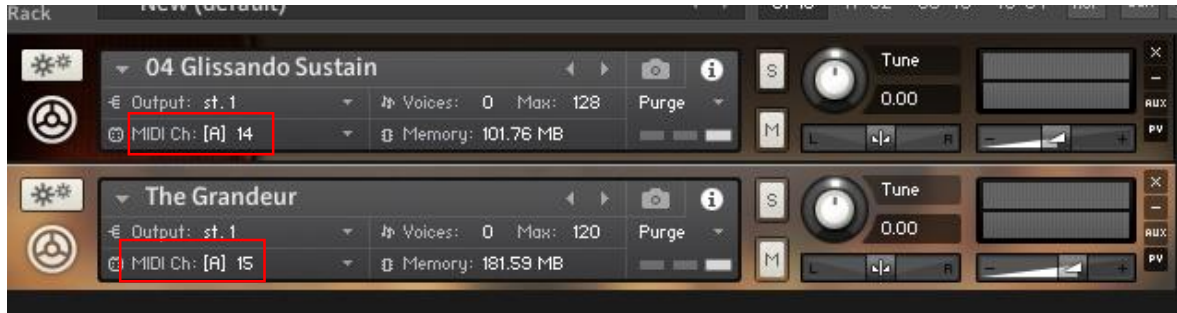
Version 1.0, 25.01.2017

Play every instrument in the KONTAKT rack with it's own melody

1. Add KONTAKT Player to Channel Rack
2. Add a MidiOut for every instrument you want to use in KONTAKT Player (e.g. MidiOut for Strings, MidiOut #2 for Piano; Create the melody in these MidiOut Piano Rolls)
3. Change Channel in MidiOut Window (e.g. MidiOut: Channel 14, MidiOut #2: Channel 15)

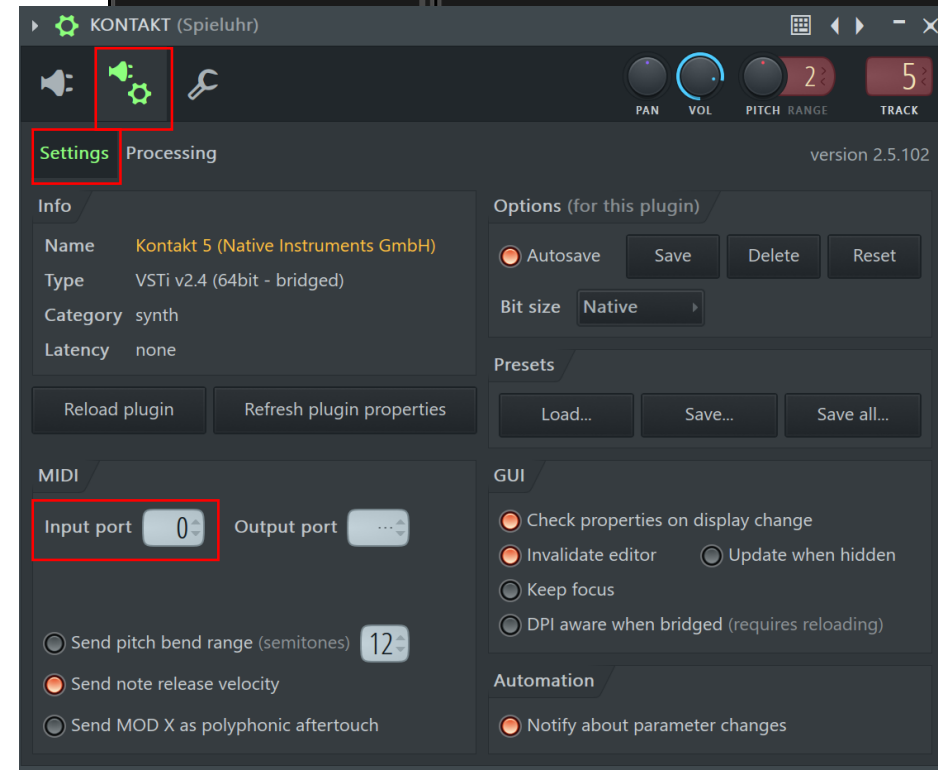


4. Change Midi-Channel for each instrument in KONTAKT Player equal to your MidiOut-Channel racks (see #3)
(e.g. Strings: Channel 14, Pianno: Channel 15)



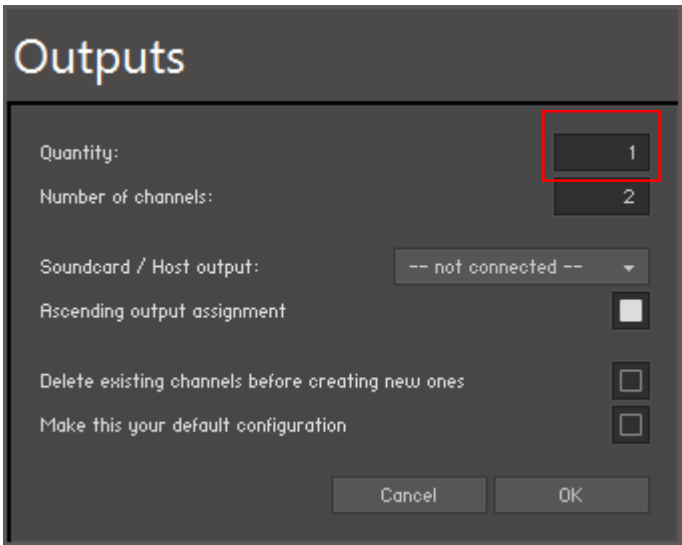
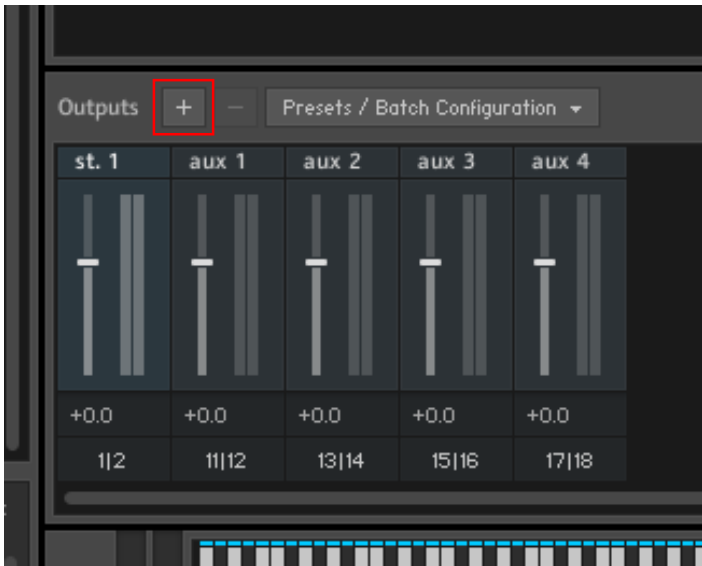
5. Change Midi Input Port in Wrapper window to „0“

6. Finished!

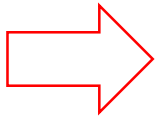
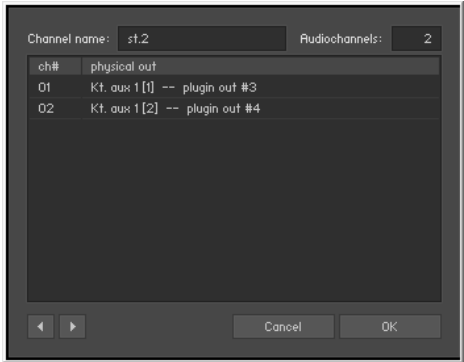
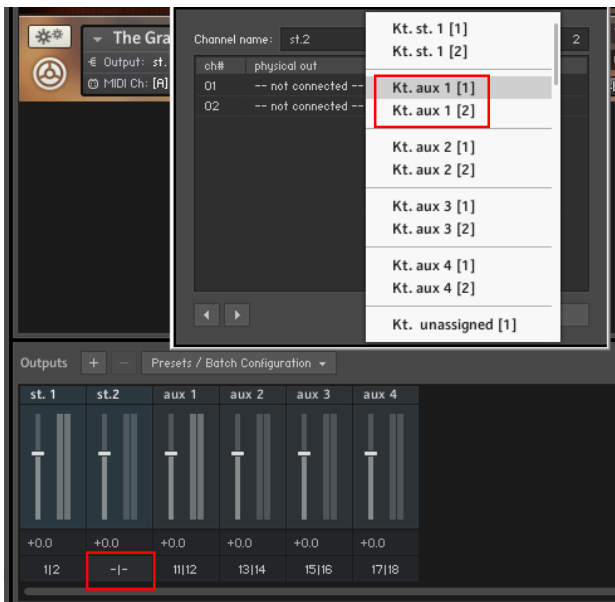


Route every instrument in the KONTAKT rack to it's own mixer track

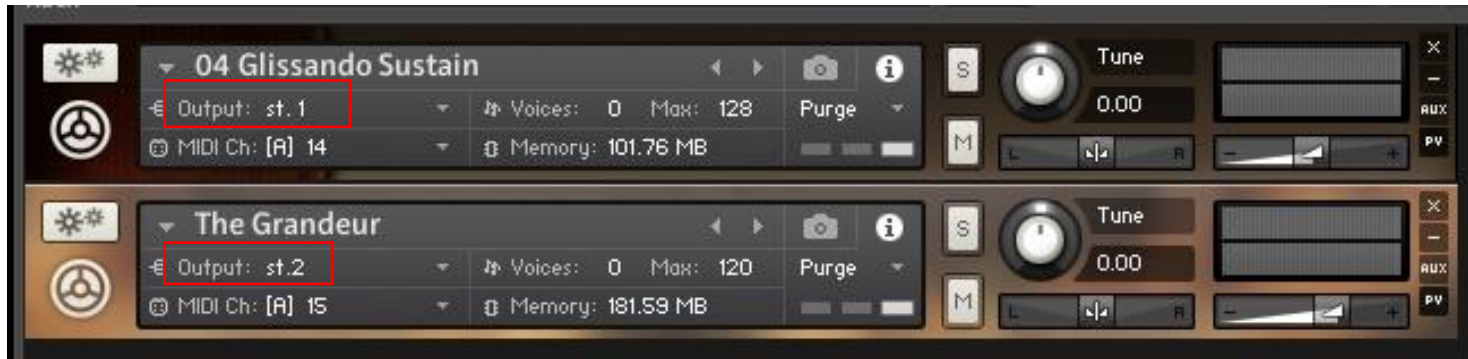
- 1. Add an additional output for each instrument (necessary from the second instrument, first is „st. 1“)



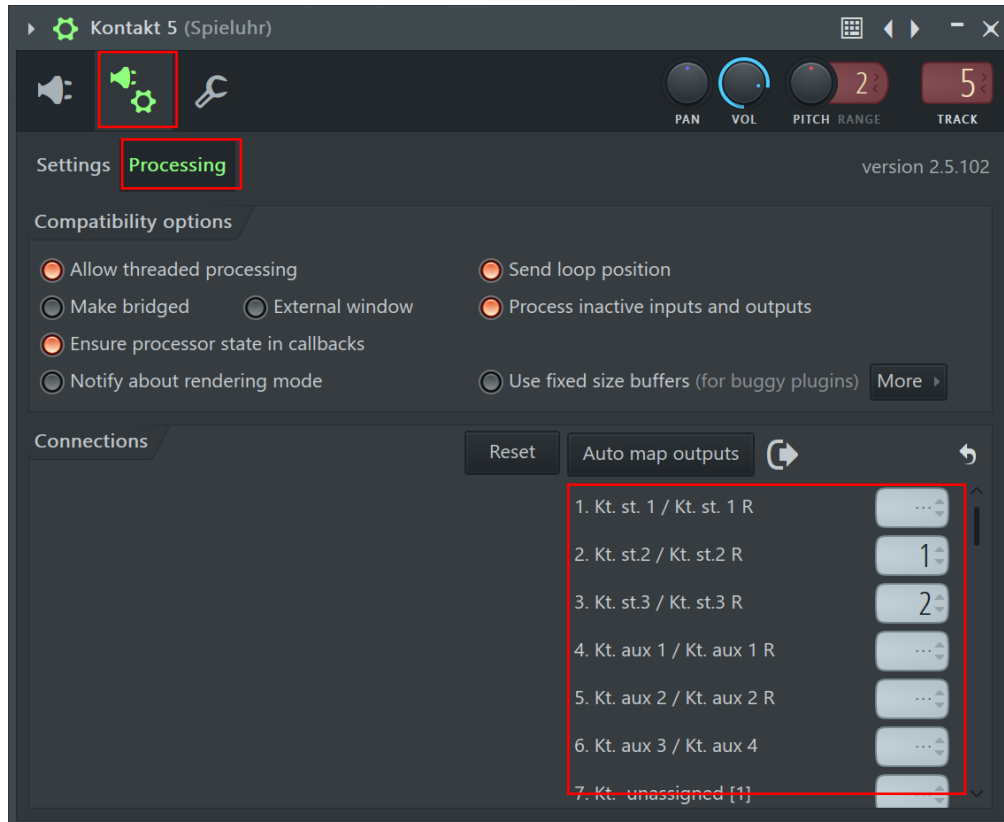
- 2. Configure channels:



3. Configure the output for every instrument



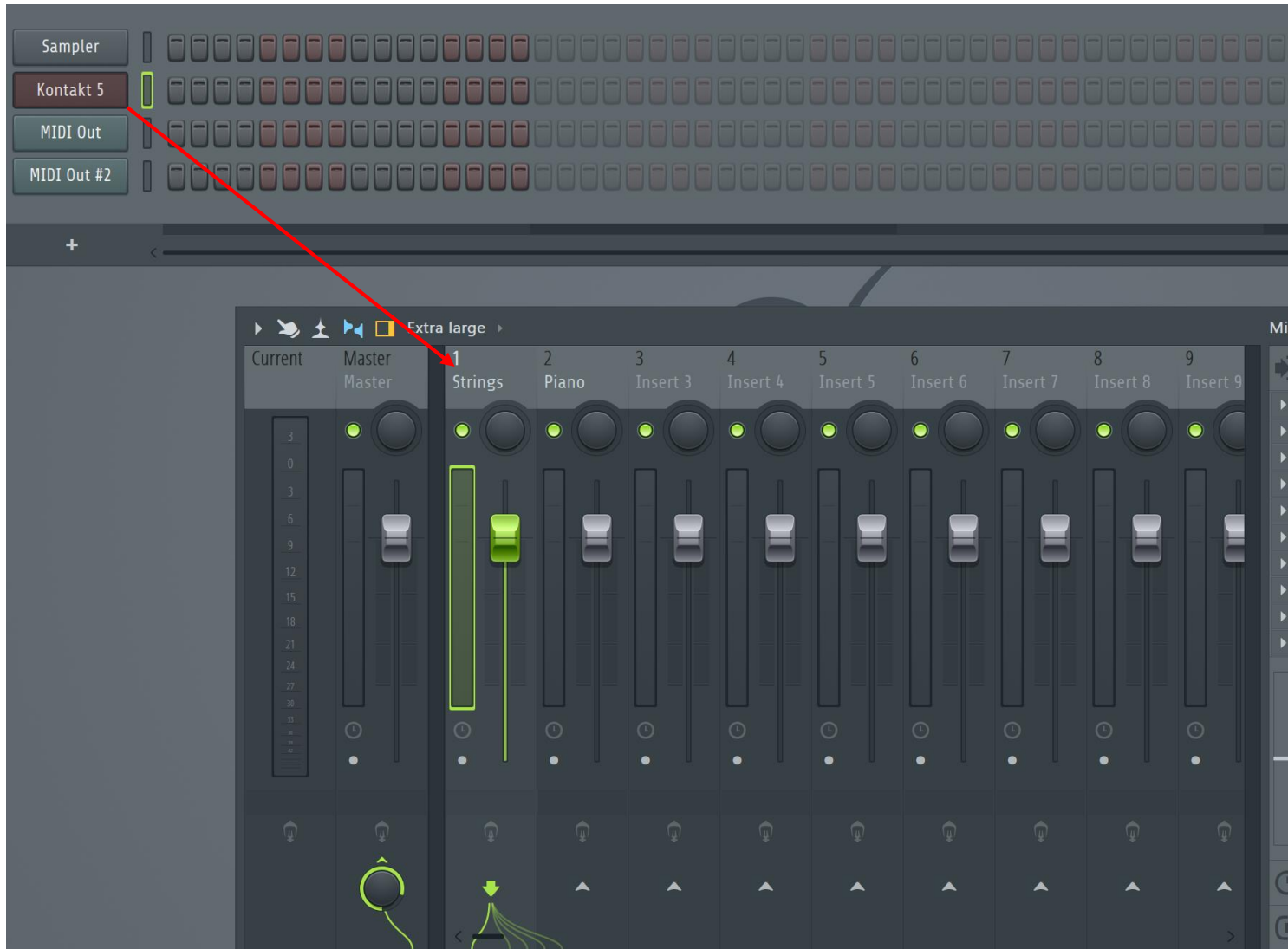
4. Configure outputs in Wrapper window



1 = 1 mixer track beside the main
2 = 2 mixer tracks beside the
main

....

5. Link KONTAKT Player to a mixer track (e.g. track 1)



6. Finished! Mixer track 1 plays strings, mixer track 2 plays the piano

Any questions?

<mailto:info@timobenz.de>

Listen to my music? Visit

www.timobenz.de